



September 2025



Project Description

The State of Alaska Department of Transportation and Public Facilities (DOT&PF) plans to improve the Glenn Highway and Hiland Road (Glenn-Hiland) interchange in the Eagle River community. The existing interchange at Glenn Highway and Eagle River Loop Road has long been a bottleneck during the morning commute hours, causing significant delays and frustrations for travelers heading southbound toward Anchorage.

The purpose of the project is to improve operations, capacity, and safety for motorized and non-motorized users. The primary objectives to meet the purpose of the project include the following:

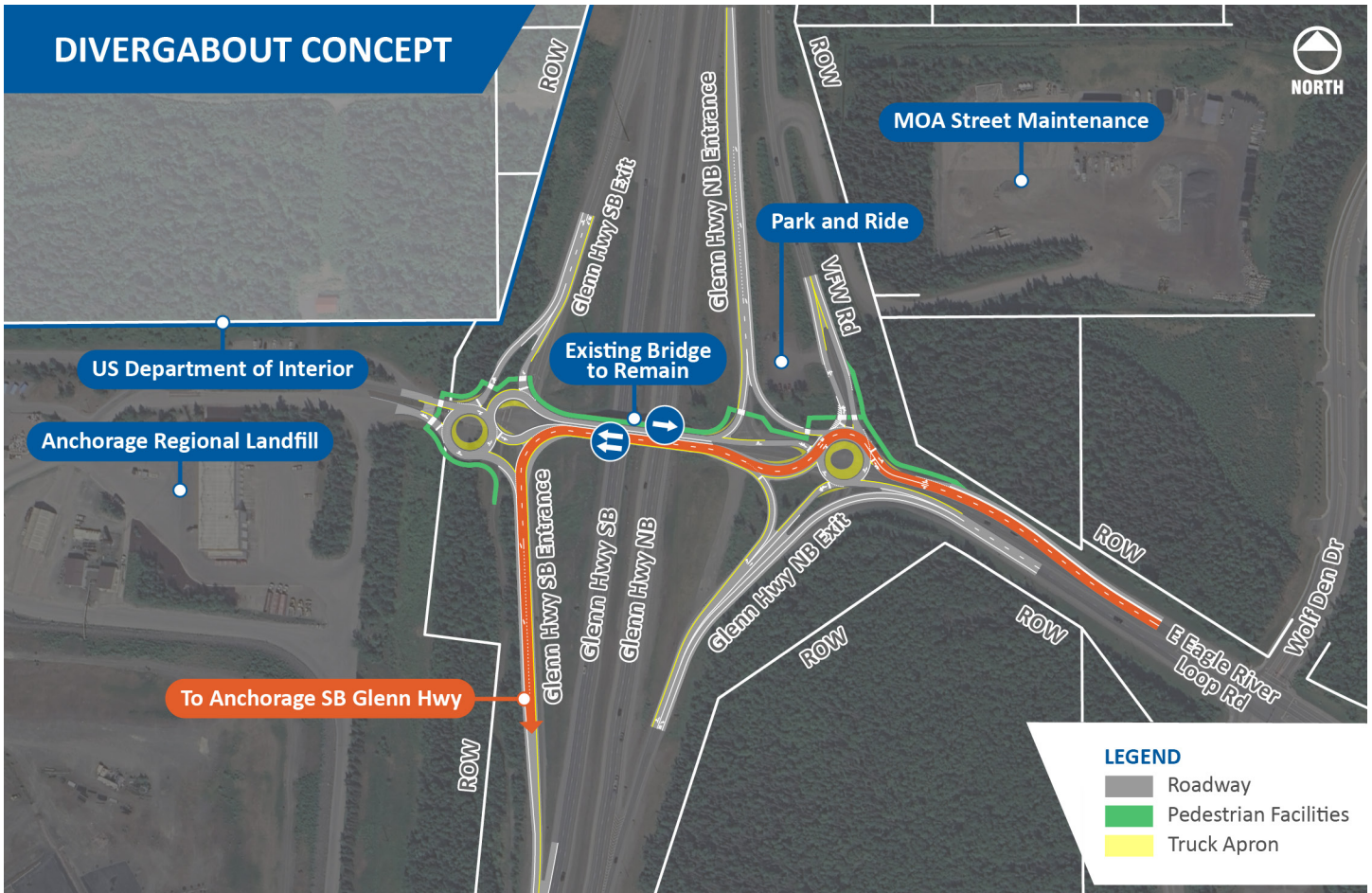
- **Enhanced Highway Merging:** Improve the efficiency of highway merging and lane utilization to alleviate congestion during peak morning hours.
- **Queuing Issues Mitigation:** Address queuing issues at the Wolf Den Drive intersection, east of the interchange, to minimize traffic backups and delays.
- **Maintenance Improvements:** Provide design solutions for the maintenance of the existing bridge, ensuring it remains functional and structurally sound.

The project will make short-term improvements at the Glenn Highway and Hiland Road interchange while maintaining the existing bridge over the highway.

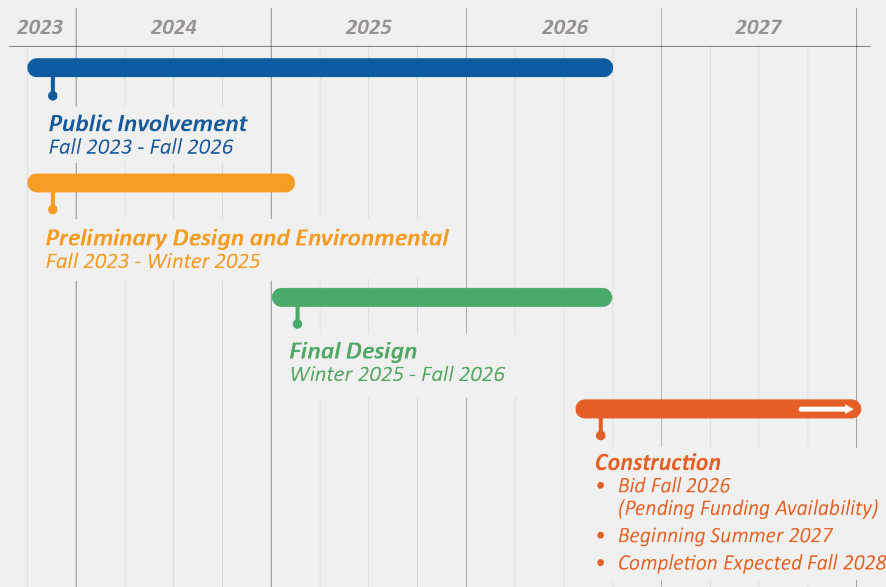
Current Status

The project team evaluated alternatives and selected the diverging diamond with roundabouts, or divergabout, for this interchange. This alternative will:

- Comprehensively improve interchange operations and performance
- Improve non-motorized facilities with refuges and single-lane crossings
- Have minimal utility impacts
- Not require a ROW acquisition from JBER
- Have a small ROW acquisition that aligns with the Anchorage Regional Landfill's gate improvements.
- Be compatible with retaining the existing bridge and a future bridge replacement



Project Schedule



Contact Information

For more information, please visit the project website at www.Glenn-Hiland.com. Contact the project team with comments and questions at Glenn-Hiland@dowl.com or call Public Involvement at (907) 562-2000.

Galen Jones, P.E.
 DOT&PF Project Manager
 (907) 269-0550

Kelly Kilpatrick, P.E.
 DOWL Project Manager
 (907) 562-2000

Morgan McCammon
 DOWL Public Involvement
 (907) 562-2000

The environmental review, consultation, and other actions required by applicable Federal environmental laws for this project are being, or have been, carried out by DOT&PF pursuant to 23 U.S.C. 327 and a Memorandum of Understanding dated April 13, 2023, and executed by FHWA and DOT&PF.

It is the policy of the Department of Transportation and Public Facilities (DOT&PF) that no person shall be excluded from participation in or be denied benefits of any and all programs or activities we provide based on race, religion, gender, age, marital status, ability, or national origin, regardless of the funding source including Federal Transit Administration, Federal Aviation Administration, Federal Highway Administration and State of Alaska Funds. To file a complaint, go to: dot.alaska.gov/cv/rts/titlevi.shtml